

GILDAN®



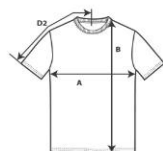
8000

DryBlend Adult T-Shirt



DETAILS

| | |
|-------------------|--|
| Weight | 186.0 G/SqM (White 176.0 G/SqM) |
| Content | 50% Cotton, 50% Polyester |
| Yarn Count | 20/1 |
| Features | Classic fit DryBlend technology: delivers moisture-wicking properties Seamless Twin needle 2.2 cms. collar Taped neck and shoulders Tear away label and double-satin shoulder label Twin needle sleeve and bottom hems Quarter-turned to eliminate Centre crease |
| Sizes | S-2XL |
| Case Packs | S - 2XL 72 PIECES |
| Colours | 8 |
| SKU's | 40 |



SPECIFICATIONS

| | Tol- | Tol+ | S | M | L | XL | 2XL |
|---|-------------|-------------|----------|----------|----------|-----------|------------|
| Centimeters | | | | | | | |
| Chest (A) | 2.540 | 2.540 | 45.720 | 50.800 | 55.880 | 60.960 | 66.040 |
| Length from HPS (B) | 2.540 | 2.540 | 71.120 | 73.660 | 76.200 | 78.740 | 81.280 |
| Sleeve length (Centre back) (D2) | 1.905 | 1.905 | 39.700 | 43.180 | 46.990 | 50.800 | 54.610 |
| Inches | | | | | | | |
| Chest (A) | 1.000 | 1.000 | 18.000 | 20.000 | 22.000 | 24.000 | 26.000 |
| Length from HPS (B) | 1.000 | 1.000 | 28.000 | 29.000 | 30.000 | 31.000 | 32.000 |
| Sleeve length (Centre back) (D2) | 0.750 | 0.750 | 15.630 | 17.000 | 18.500 | 20.000 | 21.500 |

S-2XL

| | |
|----------------|------|
| COLOURS | Code |
| Black | 036 |
| Irish Green | 167 |
| Navy | 032 |
| Orange | 037 |
| Red | 040 |
| Royal | 051 |
| Sport Grey | 095 |
| White | 030 |

CHANGES

Total Net Change 0 SKU's